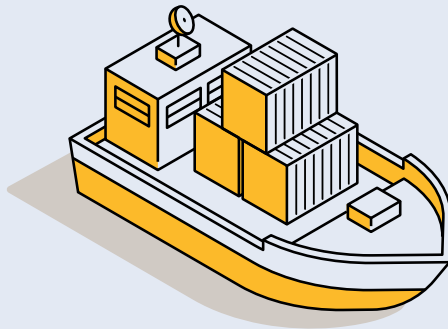
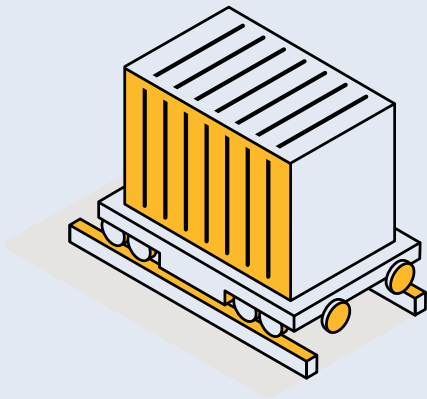


POWER ANYWHERE, ANYTIME.

# SOLAR CONTAINER

*Independence in a Box*



Because **energy** should be as  
**flexible** as your plans!



[www.solarcontainer.one](http://www.solarcontainer.one)

# FACTS



**116<sub>m</sub>**

Unfolded panels length



**240**

Number of PV modules



**720<sub>m²</sub>**

Surface area coverage



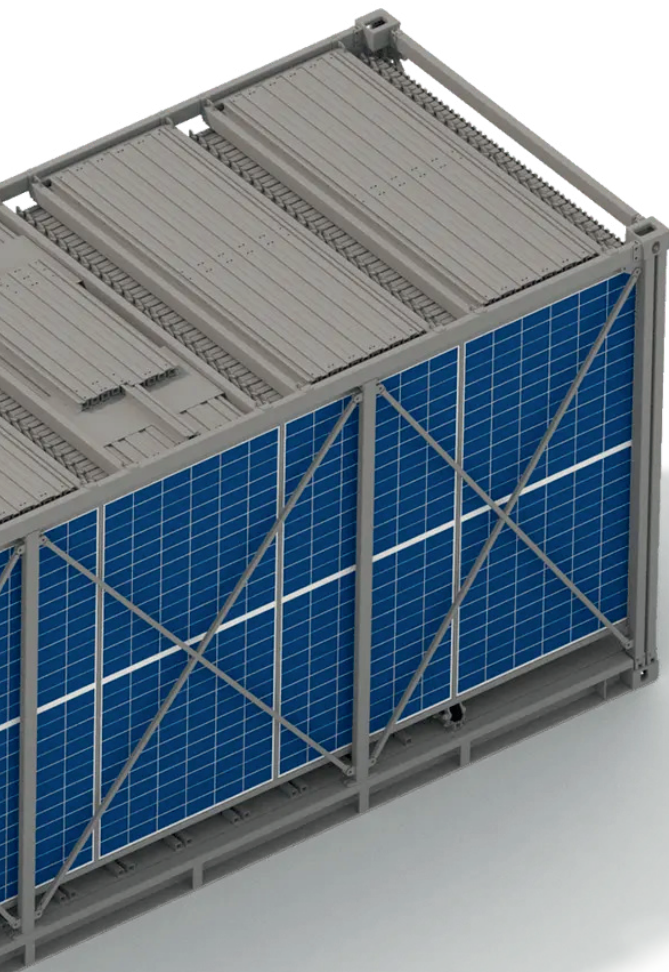
**5<sub>h</sub>**

Up to 5 hours of  
assembly time



**140<sub>kWp</sub>**

Up to power generating  
capability



**6.0m** length



**2.4m** width



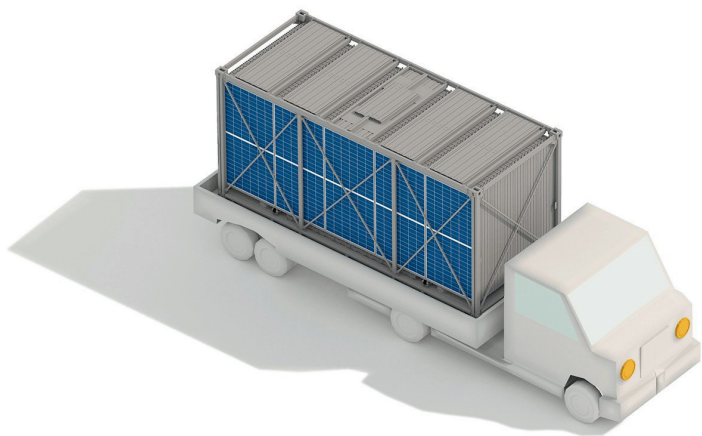
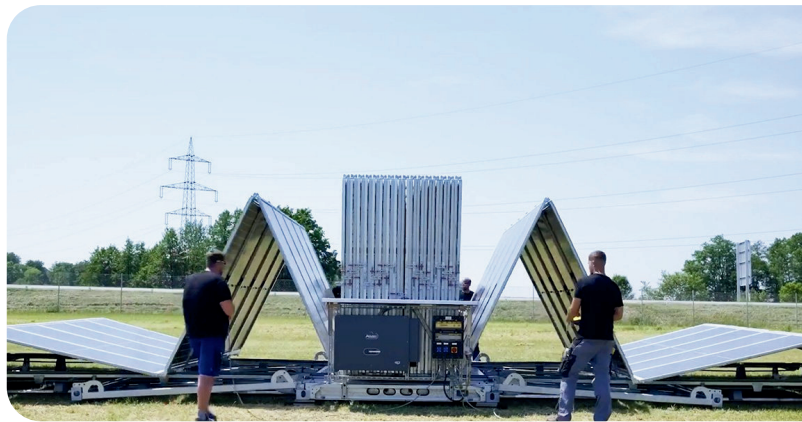
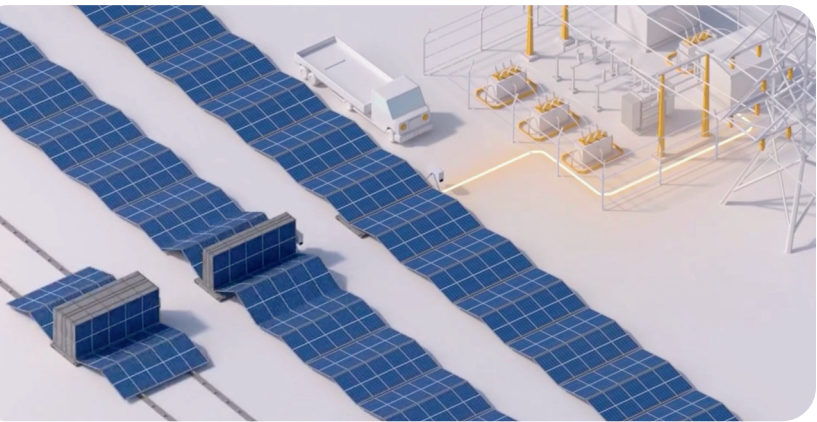
**2.9m** height



**<20t** weight

Solarcontainer  
Pitch Video





Your individual  
**configuration**  
request

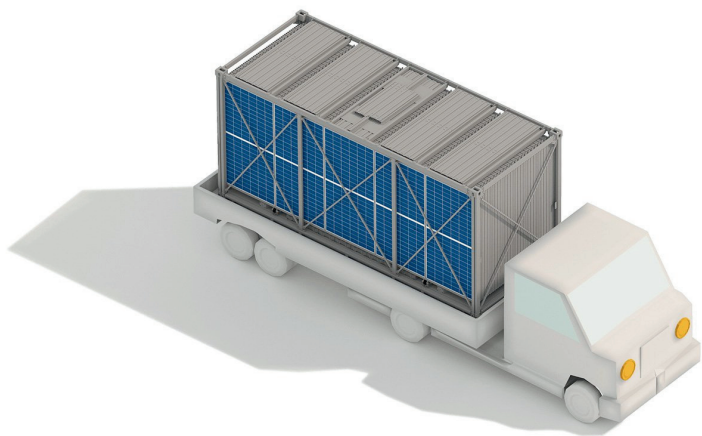
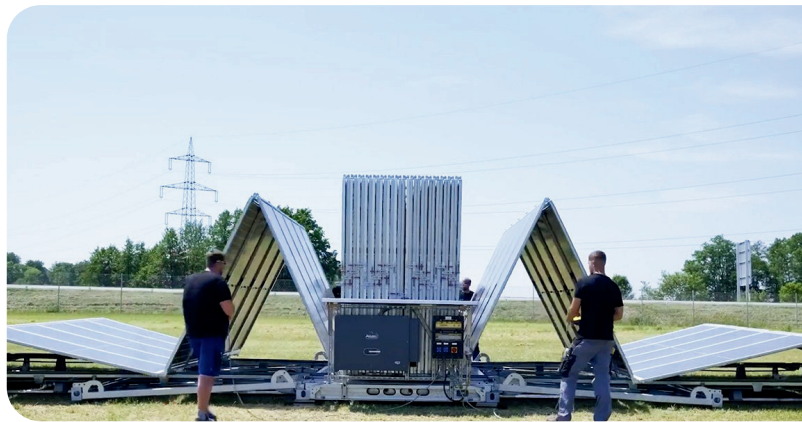
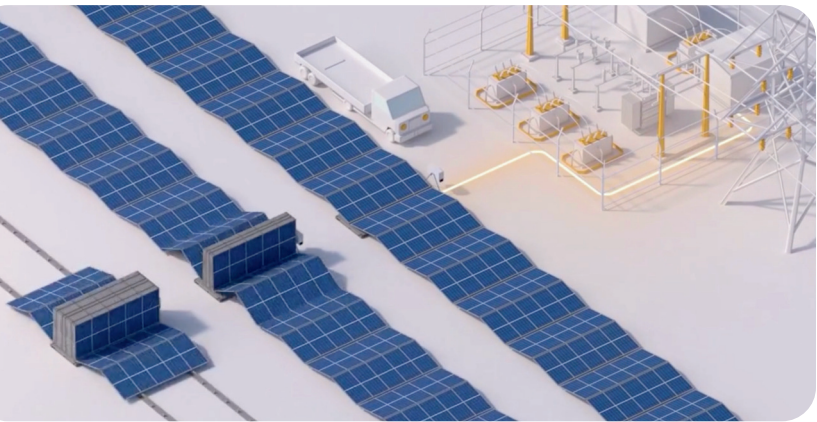


Karl Shideler, MBA - Project Manager  
karl.shideler@bridge-executive.com  
+1 (613) 797-7580



Bridge Executive Energy Solutions Ltd. | 1 Bushville Drive,  
Suite 19 | Miramichi, NB | E1N 4R5 | Canada





Your individual  
**configuration**  
request



Ken Cripps, CPA, CGA, CMA - CEO  
ken.cripps@bridge-executive.com  
+1 (506) 259-4944

Bridge Executive Energy Solutions Ltd. | 1 Bushville Drive,  
Suite 19 | Miramichi, NB | E1N 4R5 | Canada